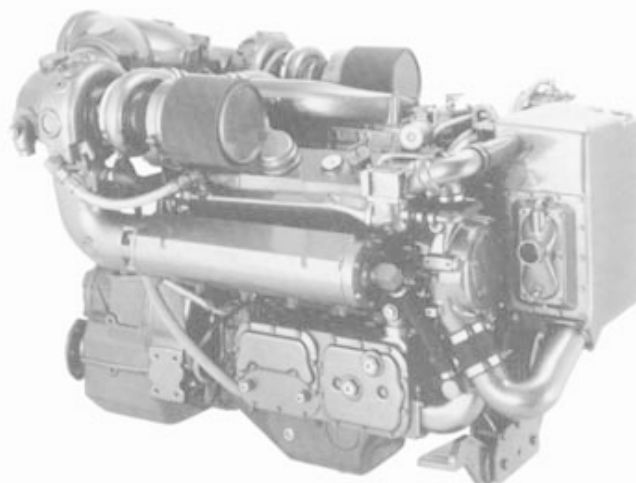


# DETROIT DIESEL Series 92

**Marine Model  
Pleasure Craft**

**8V-92TA 735 BHP**



## General Specifications

Basic Engine	8V-92TA
Model—Port	8082-3400
Starboard	8082-7400
Description	Turbocharged-Aftercooled with Bypass Blower
Number of Cylinders	8
Bore and Stroke	4.84 in x 5.00 in (123 mm x 127 mm)
Displacement	736 cu in (12.1 liters)
Compression Ratio	17.0 to 1
Weight (dry)	4200 lbs (1905 kg)

## Rated Power Output—Maximum

Gross Power	735 BHP (548 kW) @ 2300 RPM
Net Power	720 SHP (537 kW) @ 2300 RPM

## Equipment Specifications

Air Inlet Housing—With manual shutdown
Air Silencer—Two
Aftercooler—Two-pass with precooled coolant supply
Alternator—24 volt, 65 amp, flange mounted
Cooling System—Low profile cast iron expansion tank and raw water pump
Crankshaft Pulley—3 grooves, .50 inch wide
Engine Mounts—Resilient mounts for both engine and marine gear
Exhaust System—Fresh water-cooled manifolds and twin turbine housings
Flywheel Housing—SAE #1
Fuel System—Cam operated unit injectors with low pressure USCG type A external hoses, fuel filters and cooler
Governor—Variable speed
Lube Oil Filter—Full flow
Marine Gear—Detroit Diesel-5111 (1.50, 1.74, 2.04 reduction ratios)
Oil Pan—Cast iron, designed for 0°-15° inclination angle, rear sump
Starting Motor—24 volt

Rating conditions: ISO 3046, SAE J1349, SAE J1228  
77°F (25°C) and 29.31 in. Hg. (99kPa) Barometer (Dry)

For a complete listing of standard and optional equipment,  
consult your authorized Detroit Diesel Corporation representative.

Photograph illustrates a typical marine engine